




Mid Cheshire Hospitals
NHS Foundation Trust

WELCOME TO MID CHESHIRE HOSPITALS



Because you  matter

ABOUT THE TRUST



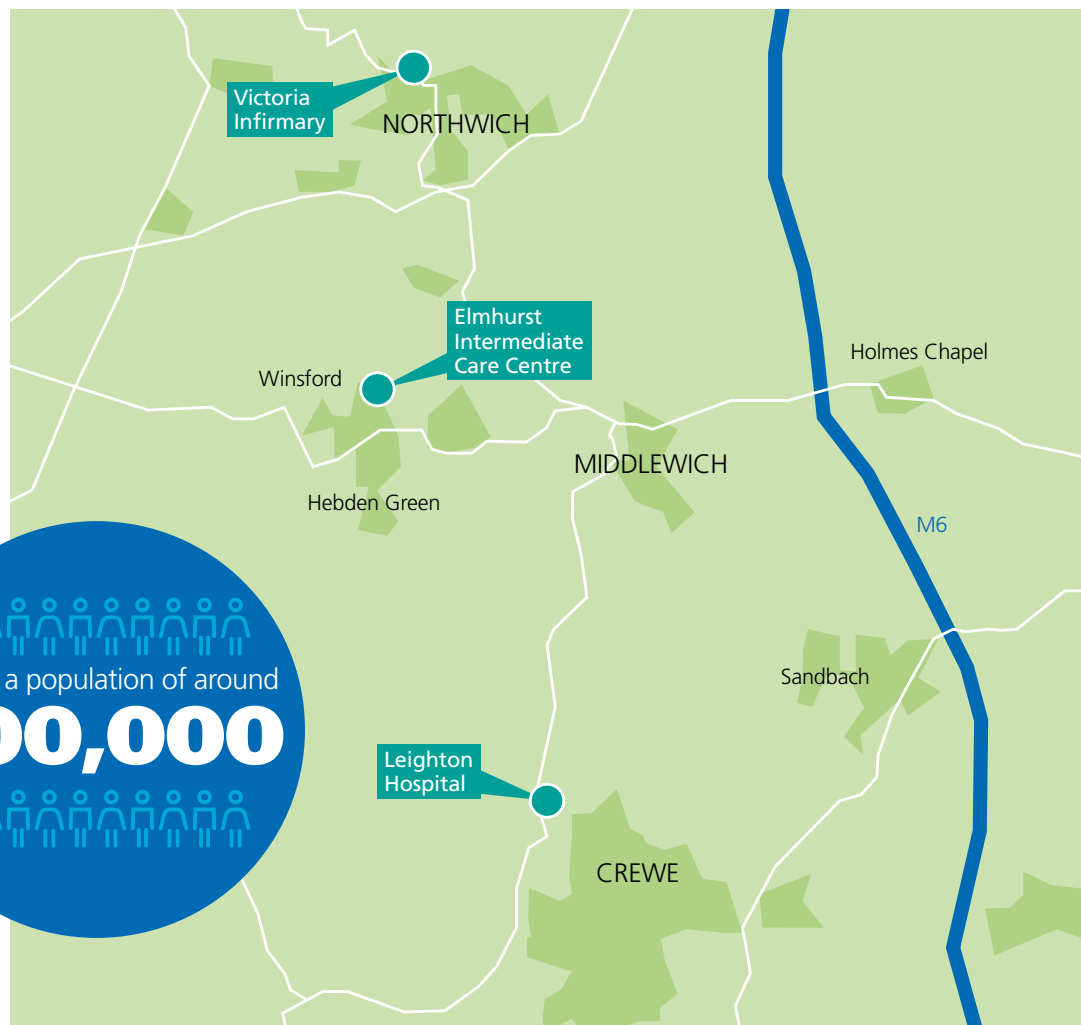
Mid Cheshire Hospitals NHS Foundation Trust (MCHFT) provides good quality, safe and effective healthcare to the people of Cheshire and beyond.

We manage Leighton Hospital in Crewe, Victoria Infirmary in Northwich, and Elmhurst Intermediate Care Centre in Winsford.



We employ almost 5,500 members of staff, have 540 hospital beds, with a range of services including accident and emergency, maternity, outpatients, therapies, and children's health.

We are also responsible for the provision of a range of community services for people across South Cheshire and Vale Royal, working in partnership with local GPs and Cheshire and Wirral Partnership NHS Foundation Trust.





With the formation of Integrated Care Systems in July 2022 MCHFT became a strategic partner in both Cheshire East and Cheshire West and Chester 'places' and is part of the Cheshire and Merseyside Health and Care Partnership caring for a population of over 2.7million.

We operate acute clinical services through four clinical divisions: Medicine and Emergency Care; Surgery and Cancer; Women and Children's, and Diagnostics and Clinical Support Services. Community services are managed through the Central Cheshire Integrated Care Partnership, with the Estates and Facilities and Corporate Services Divisions providing support to all areas.

It provides the following services:

- Emergency and elective inpatient services
- Day case services
- Outpatient services
- Diagnostic and therapeutic services
- Maternity
- Children's health
- Community services including preventative work



MEET THE BOARD

NON-EXECUTIVE DIRECTORS

NON-EXECUTIVE DIRECTORS



Megan Nurse

Chair



Lesley Massey

Deputy Chair



Tony Bristlin

Non-Executive Director



Andy Vernon

Senior Independent Director



Dr Andrew Wilson

Non-Executive Director



Diana Hampson MBE

Non-Executive Director



Tony Okotie

Non-Executive Director



Terry Whalley

Non-Executive Director

EXECUTIVE DIRECTORS

EXECUTIVE DIRECTORS



Ian Moston

Chief Executive Officer



Dr Clare Hammell

Chief Medical Officer and Deputy Chief Executive



Nicola Costin-Davis

Chief Operating Officer



Nicola Price

Chief People Officer



Scott Malton

Chief Nursing Officer



Claire Liddy

Chief Financial Officer

NON-VOTING DIRECTORS

NON-VOTING DIRECTORS



Russ Favager

Board Senior Responsible Officer - Leighton New Hospital Programme & Estates Redevelopment



Denise Frodsham

Director of Strategic Partnerships



Dylan Williams

Chief Information Officer



Caroline Keating

Director of Corporate Affairs

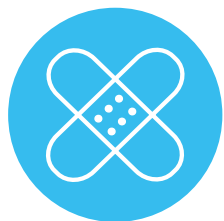
HOW WE ARE ORGANISED

DIVISIONS

| Community Services CCICP | Surgery & Cancer | Medicine & Emergency Care | Diagnostics & Clinical Support Services | Women & Children's | Estates & Facilities | Corporate Services |
|--|---|---|--|--|---|--|
| Admin Hubs & therapy booking team Ambulatory Wound Care Bowel and Bladder Community Diabetes Community Nurse inc Out of Hours Community Physiotherapy & OT Children & Young Person Continuing Care CURE Dietetics GP Out of Hours Integrated Respiratory Service IPOCH IV at Home Lymphoedema Macmillan Nurse & Therapy MCATS/First Contact Practitioners MSK Paediatric Therapy Pain Service Podiatry Pulmonary Rehab/ Long COVID School Nursing Services Speech and Language Stoma Care Stroke Rehabilitation Urgent Community Response Virtual Wards Wheelchair Service Tissue Viability Urgent Treatment Centre | Anaesthetics Cancer Services Cheshire Bowel Cancer Screening Programme Critical Care Ear, Nose & Throat (ENT) General Surgery including Paediatric Maxillofacial Surgery Ophthalmology Orthopaedics Pain Services Urology | Acute Medicine Cardiology Care of the Elderly Diabetes and Endocrinology Emergency Department Gastroenterology General Medicine Respiratory Medicine Rheumatology Stroke Care Minor Injuries Unit | Clinical Haematology Dermatology Discharge Lounge Discharge Ward Electrocardiogram (Cardiorespiratory) Elmhurst Intermediate Care Centre Inpatient Therapies Medical Records Medical Imaging Outpatient Services Pharmacy Rehabilitation Victoria Infirmary Northwich | Acute and Community Paediatrics Neonatology Obstetrics and Gynaecology | Capital Development Catering Domestics Engineering General Maintenance Health & Safety Risk Management Linen Services Medical Devices Non-Emergency Transport) Portering Postal Services Receipts and Distribution Reception Residential Accommodation Security and Car Parking Waste Management | Clinical Governance Communications Corporate Governance Corporate Nursing Digital Technology and Information Services Equality, Diversity & Inclusion Finance HR & Payroll Medical Resourcing Occupational Health Procurement & Supplies Recruitment Safeguarding Wellbeing |

OUR VITAL STATISTICS

In 2023-24, we...



saw
289,081
outpatients

had **116,139** A&E attendances
and admitted **39,042** emergency patients



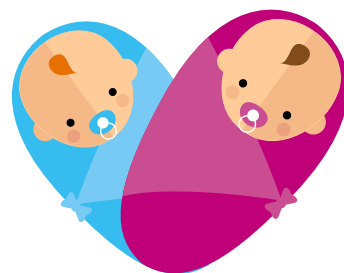
carried out
115,051
diagnostic tests



At the end of 2023-24...

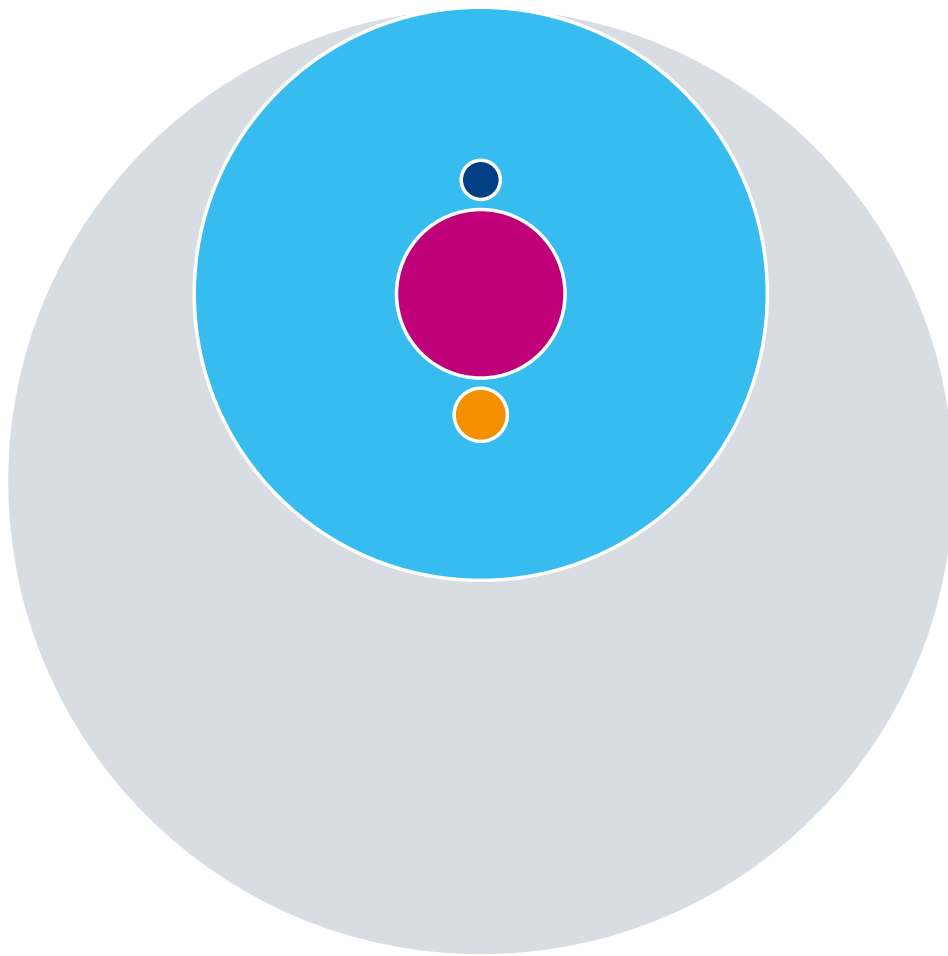
the Trust received income of
£399.9m

and incurred annual expenditure of
£455,141m



2,915
births were supported





Numbers of staff:

5,774 (WTE):

doctors

394

nurses and midwives

1,698

allied health professionals

536

Number of Foundation Trust Members

9,557

In 2023-24, there were...



At 31 March 2024,
38,562
patients referred for
treatment, of whom
53.2% were waiting
less than 18 weeks



19,761
patients referred under
the 2-week-wait cancer
pathway of which
88.3% were seen
within two weeks

Confidence in our services:



93% of Friends
and Family Test responses
were good or very good

OUR MISSION OBJECTIVES AND VALUES

What we want to achieve, how we will do this and what we believe in.

OUR MISSION IS:

To inspire hope and provide unparalleled care for the people and communities of Cheshire, helping them to enjoy life to the fullest.

OUR OBJECTIVES ARE:

- 1. Improving Health Outcomes** to deliver the best care and experience centred on the patient's needs
- 2. Working in Partnership** to collaborate across boundaries to enhance patient care
- 3. Empowering our staff** to be the best that they can be
- 4. Building a Better Tomorrow** to deliver a sustainable and innovative infrastructure

OUR VALUES ARE:



We put you first



We strive for more



We respect you



We work together

Because you matter

OUR STRATEGY



The Trust's five-year strategy 2021-26 is based on four models of care:

- **Help me stay independent:** We work with carers, patients and their local community to keep them well
- **Help me find out what's going on:** We provide the expertise, access and convenience to diagnose and develop treatment plans for our patients
- **Help me when things go wrong:** We provide medical and surgical services to treat our patient and deliver optimal outcomes
- **Help me to the end of Life:** We provide the best possible end of life care

These models are delivered through five strategic plans:

- | | |
|--------------|----------------------------|
| Partnerships | - Championing Partnerships |
| Leadership | - Commitment to Leadership |
| Workforce | - Inspire the workplace |
| Digital | - Embracing Digital |
| Estate | - Build for the Future |

Our strategy is driven by a strong focus on what our local population want and need to enable them to live health and happy lives. It is recognised that the Trust cannot deliver great care for the local population on our own and needed to adapt and become a key part of a wider ecosystem of partners to make this happen. This strategic ambition aligns with the national direction of the NHS and supporting legislation.

We focus on being an anchor institution that delivers great care, with our local partners, through a single strategic vision and the four care models. We collaborate with partners in both Cheshire East and Cheshire West PLACES and in the two provider collaboratives, Cheshire and Merseyside Acute and Specialist Trusts (CMAST) and Mental Health Learning Disability Community. Our strategic direction is aligned with the strategies of these system arrangements and that of the Cheshire and Merseyside Integrated Care System.

KEY RECENT ACHIEVEMENTS AND MAJOR PROJECTS



VIN Surgical Centre opening 2024



- Launched our innovative 5-year Trust Strategy
- Launched Continuous Improvement programme
- £3million extension to the Critical Care unit adding 4 Beds – total 18
- Opened a new £18m Emergency Department at Leighton Hospital
- Opened a £2m Community Diagnostic Centre at Victoria Infirmary, Northwich (VIN)
- Relocated and refurbished our Same Day Emergency Care
- Opened a new Frail Elderly Assessment Unit
- Launched 60 virtual ward beds including remote monitoring for frail patients and those with respiratory conditions
- Accelerated a multi-million pound inspection and refurbishment programme at Leighton due to the RAAC* planks in Jan 2023 – ongoing
- Significant development of the Integrated Placement of Care Hub with partners
- New Pharmacy Medipoint collection locker enabling patients to collect their medication when it is convenient for them, 24-7
- New Pharmacy Aseptic Unit operational from June 2023
- Built a £15m two-ward modular unit to accommodate future ward decanting as RAAC wards are repaired and stabilised
- Contracted Meditech to provide a new digital clinical system in 2024



Digital Clinical System

RAAC Remains*

Leighton Hospital was built in the 1970s using reinforced autoclaved aerated concrete planks in the roof and walls (known as RAAC planks) which accounts for more than 60% of the hospital's site footprint. RAAC has a lifespan of 30 years and Leighton is now 50 years old with stabilising and remedial works to wards and departments costing over £55m to date with a further £29m allocated for 2023-24.

While the Trust works on the detailed plans for the new hospital, remedial and refurbishment works, directed by our specialist advisor, will continue to ensure the safety of staff, patients, and visitors. This includes opening two modular wards next month to create the capacity needed to undertake some of this work. The patience and forbearance of patients, staff and visitors is appreciated while these vital works are carried out. To learn more visit <https://www.mcht.nhs.uk/RAAC>

THE NEW HOSPITAL PROGRAMME

Mid Cheshire NHS Hospitals Foundation Trust will develop a new health and care neighbourhood, which will include our new Leighton Hospital in Crewe.

Our ambition

We are doing this because our society is changing, with an aging population and increasingly diverse communities, there is a rising demand for healthcare, which is in part due to a higher number of people living with long-term conditions, and this is only set to increase. It's clear the way healthcare is delivered must change. Not only to respond to the needs of today but be fit for the future of tomorrow.

Right now, Leighton Hospital is no longer fit for purpose and its structural life is coming to an end. As part of the national New Hospital Programme, Leighton Hospital is being reimagined and new land has been secured to build without the barriers of what's been before.

This is a once in a generation opportunity to change how healthcare is delivered, and how each of us can play our part in creating the best, Healthier Future.

We are working together to create a new healthcare model — to create a place where people receive care in their homes and communities and can access services or go to hospital when they need to. A place where resources are utilised well, and people are actively involved in their care. A place where technology, digital and data will help both proactive and personalised care be more effective, a place where we look after each other, we collaborate, where people join forces to improve the whole.

A place of 'Healthier Futures' for our people across Mid Cheshire.

Visit the **Healthier Futures microsite** for further information about the programme.



Healthier Futures

WORK FOR US

THEATRE NURSE/ OPERATING DEPARTMENT PRACTITIONER - BAND 5

We are now looking for a qualified practitioners to join our scrub or anaesthetics teams. We have vacancies across main theatres, maternity theatres and in our brand new state of the art theatres at Victoria Infirmary, Northwich.

This is an excellent time to join the Trust as we have just started work on our Healthier Futures programme, developing services for the people of Cheshire well into the future.

The Theatre Management team is passionate about cultivating a safe and friendly environment for both staff and patients. We will ensure you get the development and training you need to progress in your careers and meet your potential.

Main Job Responsibilities

- Assess, plan and implement care according to patient needs, assisting in clinical/operative procedures and by providing pre, intra and postoperative care, preparing for and handing over patient care to others.
- Work collaboratively within the multidisciplinary team/agencies to ensure that patient needs are met especially in relation to on going care needs and discharge arrangements.
- Involve patients, relatives/carers in providing reassurance and support to assist their understanding and co-operation.
- Ensure that the clinical environment is correctly and safely prepared, that the appropriate level of cleanliness is maintained, and that relevant materials and equipment needed for clinical procedures are available and ready for use, including the clearing away and restoring equipment/ environment afterwards.
- Recognise and respond appropriately to urgent and emergency situations.
- Collect, collate and report information, maintaining accurate patient records/documentation.
- Participate in the surgical/ anaesthetic on call rotas.
- Continually monitor standards, by identifying risks, benchmarking, audit and research, assisting the Senior Theatre Practitioner in the implementation of action plans.
- Participate in the active management of risk, by accurate recording and reporting and correct maintenance of records and documentation.

**For further details / informal visits contact:
Emma Reay, Theatre Manager,
emma.reay@MCHT.nhs.uk
or 01270 278416.**

Full details about all current vacancies can be found on the Trust's website, but please email recruitment@mcht.nhs.uk if you can't find what you're looking for.

ABOUT THE VICTORIA INFIRMARY



The Victoria Infirmary in Northwich provides a range of services to the local community, including a minor injuries unit, therapy services, and outpatients clinics, such as for cardiology, dermatology, and Ears, Nose and Throat.

In 2022, a community diagnostic centre opened at the site providing diagnostic testing seven days a week.



New surgical centre

The Cheshire and Merseyside Surgical Centre at the Victoria Infirmary will provide a range of state-of-the-art clinical areas to support patient care.

These include two advanced operating theatres, one dedicated to cataract surgery and the other functioning as a multi-specialty theatre accommodating orthopaedics, ENT, dermatology, general surgery, and pain management. There will also be a treatment room, recovery area and consulting rooms.

Our ambition is to treat a large number of 'high volume low complexity' patients from across the region who require less complex operations and procedures. This will help reduce waiting times for patients, with an immediate focus on those who have been waiting 52 weeks for treatment. We also aim to reduce the overall backlog. The centre is scheduled to open in spring 2025 and will treat around 12,000 patients each year



Centre of excellence

Our ambition is that the new Cheshire and Merseyside Surgical Centre at Victoria Infirmary will become a cataract centre of excellence, providing eye care for the people across the region. This will mean there will be fewer people waiting for eye surgery across the region, as well as greatly improving patient care.

HEALTH AND WELLBEING

We recognise that staff health and wellbeing can not only affect sickness absence, retention and patient outcomes but also staff engagement and morale and how an individual experiences work.

The Trust is committed to supporting our workforce to take ownership and responsibility for their health and wellbeing by developing rapid access support systems such as physiotherapy and by helping staff to manage their stress effectively.



This is underpinned by a range of wellbeing support activities, a focus on building resilience and encouraging self-care.

An Occupational Health service is provided to all Trust employees and a small number of NHS and non-NHS clients. It is a nurse-led service which aims to promote, protect and prevent ill health for our people.

We also have Mental Health First Aiders who are a first point of contact for anyone experiencing a mental health issue or who are in emotional distress.

Equality Diversity and Inclusion

The Trust is committed to valuing diversity in employment, service delivery practices and its general environment. An expectation of all leadership posts within the Trust is that each individual will take responsibility for promoting inclusive and accessible service provision, staff development and a culture that values and respects difference.

There are three active staff networks:

Disabled and Carers Staff Network: supporting those colleagues who are disabled or who are a carer for someone else

LGBT+ Staff Network

The Culturally Diverse Staff Network: supporting colleagues from Black, Asian and Minority Ethnic communities.

CHESHIRE – A COMBINATION OF CITY, TOWNS AND PICTURESQUE COUNTRYSIDE



The county of Cheshire covers 2.3 km² with a population of around 1.1 million and borders Merseyside and Greater Manchester to the north, Derbyshire to the east, Staffordshire and Shropshire to the south, and Flintshire and Wrexham to the west, with a short coastline on the Irish Sea.

The county comprises four unitary authorities:

1. Cheshire West and Chester - population 399K
2. East Cheshire - population 357K
3. Warrington - population 211K
4. Halton - population 129K

The Trust takes patient referrals from East Cheshire and Cheshire West and Chester boroughs.

Cheshire towns and villages are very popular with commuters for their quick and easy transport links with bigger cities like Chester, Manchester and Liverpool and beautiful countryside surroundings.

For families, Cheshire offers a wide range of excellent schools along with plenty of access to fresh air and parks to play in, while it's only a short drive to stunning places like the Peak District, Lake District and North Wales.

Cheshire is a diverse county with lots to offer. Rural and full of history and heritage, the county of Cheshire is home to a whole raft of unspoilt towns and villages. One of Britain's most affluent counties, its towns and villages often make it into the 'most desirable' lists of places to live published by the national press.

Cheshire was once at the heart of the salt, chemical and railway industries. While these sectors have declined over time, service and financial industries have sprung up to bolster the local economy creating jobs in retail, financial services, internet companies and call centres.

Although Cheshire is rural, it is well connected to the rest of the country with excellent transport networks. Many train lines run through key towns in Cheshire and Crewe is famously well connected, with access to London Euston, Scotland, Wales, the Midlands and more. Manchester and John Lennon Liverpool airports are both 40mins drive.





Mid Cheshire Hospitals NHS Foundation Trust
Middlewich Road, Crewe, Cheshire CW1 4QJ

mcht.nhs.uk   MidCheshireNHS

Because you  matter